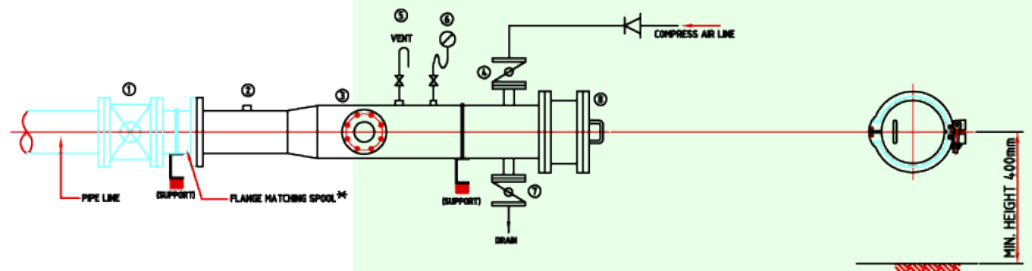


Industrial Equipment - Universal Pig Launcher / Receiver



NOTE : ✱ FLANGE MATCHING SPOOL REQUIRED
IF VALVE FLANGE IS OTHER THAN
PN 16 FLANGE

- ① ISOLATION BALL VALVE (FULL BORE)
- ② MONITOR PIG PASSAGE INDICATOR / SIGNALLER
- ③ BY PASS
- ④ COMPRESSED AIR LINE
- ⑤ AIR VENT
- ⑥ PRESSURE GAUGE (O-RING)
- ⑦ DRAIN VALVE
- ⑧ END CLOSURE MODEL WM-CD-250

- > Launcher/Receiver designed to ASME code for unfired pressure vessel, tested and approved by DOSH, third party inspection can be provided on request.
- > Quick opening clamp type end enclosure for ease of placement and retrieval of monitor pig.
- > Flange mounted to launcher/Receiver head to ease maintenance and interchangeable.
- > Custom make to meet application.



WATERMECH ENGINEERING SDN BHD (93334-W)

No. 11, Jalan TSB8, Taman Industri Sg. Buloh,
47000 Sg. Buloh, Selangor Darul Ehsan, Malaysia

Tel : 603-61571688 Fax : 603-61571633

e-Mail : watermech@watermech.com

web: <http://www.watermech.com>